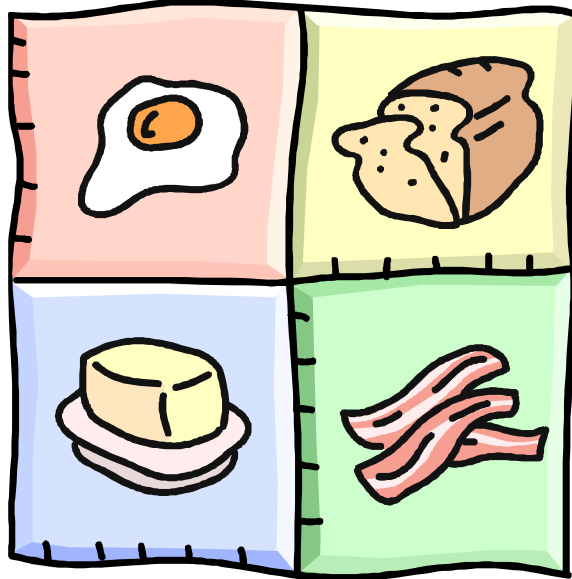


WAYÁCHE GASÍⁿXCI

itá



wabóski

bazéni wéli

washíⁿ

mokáⁿ sàbe

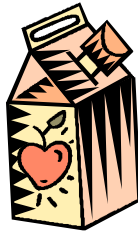
(waskáhiⁿga shke)



zhaⁿní

bazéni

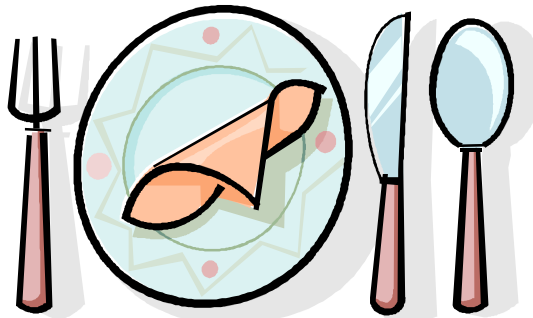
shétaⁿgani



zíhi-tàⁿga

wahúkazhata

waská
(wébasuhu shke)



máⁿhiⁿ

cihóba

WAYÁCHE MIⁿYÓTAⁿ

ta oláⁿ



ta níⁿ

do ská
ishtáxe



sàkoje pá

do ská
wadághughe



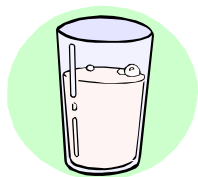
dóle zíhi

wabóski
skúwe



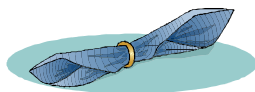
shétaⁿga

bazéni



nì gaphóki

wébasuhu



cihóba

WAYÁCHE PÁZE

<p>do ská (bazéni wéli shke)</p> <p>hoⁿblíⁿ dázhe</p>			<p>ho</p> <p>ta</p>
<p>bazéni</p>			<p>ni</p>
<p>wabóski skúwe</p>			<p>mokáⁿ sàbe waskáhiⁿga</p>
<p>mokáⁿ pa</p>			<p>nìskúwe</p>
<p>wahúkazhata</p> <p>waská (wébasuhu shke)</p>			<p>máⁿhiⁿ</p> <p>cihóba</p>